







Wireless gateway settings- Actiontec V1000H

Your TELUS wireless gateway will allow you the option of connecting devices wirelessly, creating your own wireless home network.

For your security, your wireless gateway needs to be configured with a wireless network name (SSID) and a network security key. Please make sure to write this information down, as you will need to select your wireless network name and enter in your network security key every time you want to access your wireless home network.

If you have not changed the wireless settings of the device, you will be able to locate the settings at the bottom of the gateway.

Actiontec V1000H	Default Device Settings														
<p>FC Tested To Comply With FCC Standards FOR HOME OR OFFICE USE This Product Complies with 47CFR Part 68 and Canadian ICES-003 Contains FCC ID: LNQ802MBN Contains IC: 2496A-802MBN US: LNQDL02BQ1000H IC: 2496A-Q1000H</p> <p>UL US LISTED I.T.E. E212044 Made in China</p>	<table><tr><td>GUI Access:</td><td>HTTP://192.168.1.254</td></tr><tr><td>Username:</td><td>admin</td></tr><tr><td>Password:</td><td>telus</td></tr><tr><td>Network Name:</td><td>TELUS001</td></tr><tr><td>Wireless Network Key:</td><td>984b895c77</td></tr><tr><td>WPS PIN:</td><td>91771179</td></tr></table> <p>H/W Ver: 1A F/W Ver: 31.30L.25</p> <table><tr><td> S/N: CVGA0121300001</td><td> MAC ID: 002688000001</td></tr></table>	GUI Access:	HTTP://192.168.1.254	Username:	admin	Password:	telus	Network Name:	TELUS001	Wireless Network Key:	984b895c77	WPS PIN:	91771179	 S/N: CVGA0121300001	 MAC ID: 002688000001
GUI Access:	HTTP://192.168.1.254														
Username:	admin														
Password:	telus														
Network Name:	TELUS001														
Wireless Network Key:	984b895c77														
WPS PIN:	91771179														
 S/N: CVGA0121300001	 MAC ID: 002688000001														

Step 1: Using the computer you connected to the wireless gateway, open your Internet browser (Example: Internet Explorer) and enter <http://192.168.1.254>

Step 2: Enter in username and password and click OK
Username: admin
Password: telus

Home **Status** **Wireless Setup** **Firewall** **Advanced Setup**

Summary
 Broadband: **CONNECTED**
 Wireless: **ENABLED** 1 Client Connected
 System Up Time: 11d, 7h, 35m
 DSL Link Up Time: 11d, 7h, 34m

Product Info
 Model#: V1000H
 Serial#: CVGA0161900037
 MAC Address: 00:26:88:00:03:1
 Firmware Version: 31.30L45

Login to make changes to your router settings
 Username: tech
 Password: *****
 Login

WAN Connection Status
 WAN Type: DSL
 Dynamic/Static: Dynamic
 Modem IP Address: 209.121.124.13
 Subnet Mask: 255.255.255.0
 Default Gateway: 209.121.124.1
 Lease Time Remaining: 1H 34M 24S
 DNS Address #1: 207.102.93.157
 DNS Address #2: 199.185.220.52

Wireless
 SSID: TELUS0037
 Security: Enabled
 Security Type: WPA/WPA2-AES

Home Network
 Unknown Connected 192.168.1.65
 m04520 Connected 192.168.1.64 1000Mbps Full-Duplex

Firewall
 UPnP Setting: Enabled
 Firewall: NAT Only
 Blocking/Filtering: Enabled

Diagnostics - Login Required
 Ping
 Traceroute
 Wireless Reset
 Device Reboot
 Factory Reset
 DHCP Release/Renew

Step 3: Select NO to have password changed

Home **Status** **Wireless Setup** **Firewall** **Advanced Setup**

Welcome

We recommend you change the default username and password to enhance security. Do you want to do it now?

Yes No

Step 4: Select Wireless Settings Button at top of the screen

Home **Status** **Wireless Setup** **Firewall** **Advanced Setup**

Summary
 Broadband: **CONNECTED**
 Wireless: **ENABLED** 1 Client Connected
 System Up Time: 0d, 0h, 22m
 DSL Link Up Time: 0d, 0h, 21m

Product Info
 Model#: V1000H
 Serial#: CVGA0161900037
 MAC Address: 00:26:88:00:03:1
 Firmware Version: 31.30L45

Login Status
 You are currently logged in as: admin
 Log Out

WAN Connection Status
 WAN Type: DSL
 Dynamic/Static: Dynamic
 Modem IP Address: 209.121.124.245
 Subnet Mask: 255.255.255.0
 Default Gateway: 209.121.124.1
 Lease Time Remaining: 1H 38M 6S
 DNS Address #1: 207.102.93.157
 DNS Address #2: 199.185.220.52

Wireless
 SSID: TELUS0037
 Security: Enabled
 Security Type: WPA/WPA2-AES

Home Network
 Unknown Connected 192.168.1.65
 m04520 Connected 192.168.1.64 1000Mbps Full-Duplex
 L002236 Connected 192.168.1.66 1000Mbps Full-Duplex

Firewall
 UPnP Setting: Enabled
 Firewall: NAT Only
 Blocking/Filtering: Disabled

Diagnostics - Login Required
 Ping
 Traceroute
 Wireless Reset
 Device Reboot
 Factory Reset
 DHCP Release/Renew

Step 5: On the Basic Settings page, choose the following settings:

Wireless Radio: Should be “enabled”

Select SSID: Choose the SSID that you want to use.

SSID Broadcast: should be “enabled”

SSID Name: Enter SSID name that you want to use

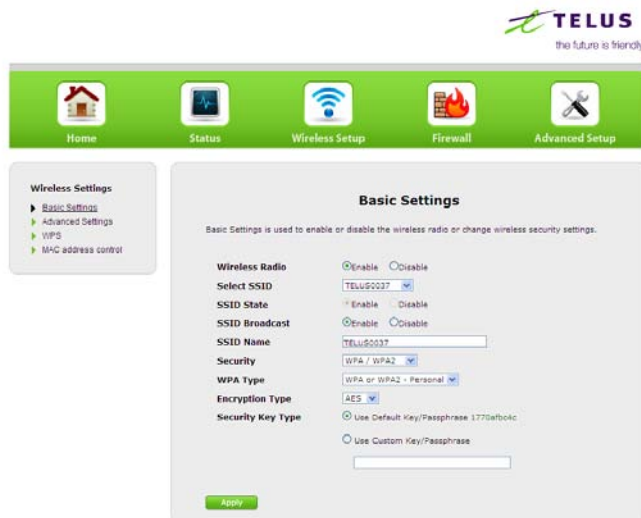
Security: Should be “WPA/WPA2”

WPA Type: Should be “WPA or WPA2 Personal”

Encryption Type: Should be “AES”

Security Key Type: Select “Use Default Key/Passphrase

-If use custom Key/Passphrase used key must be a minimum of 8 to a maximum of 63 characters



Step 6: Click **Apply**

To connect additional devices to your wireless home network, you will need your wireless network name and network security key.

Open your browser and enter an Internet address to ensure that you are now connected.

Configure your primary or additional computers for a wireless Internet connection

Step 1

Ensure that you have a wireless network card installed in your computer (most PCs now come with network cards installed)

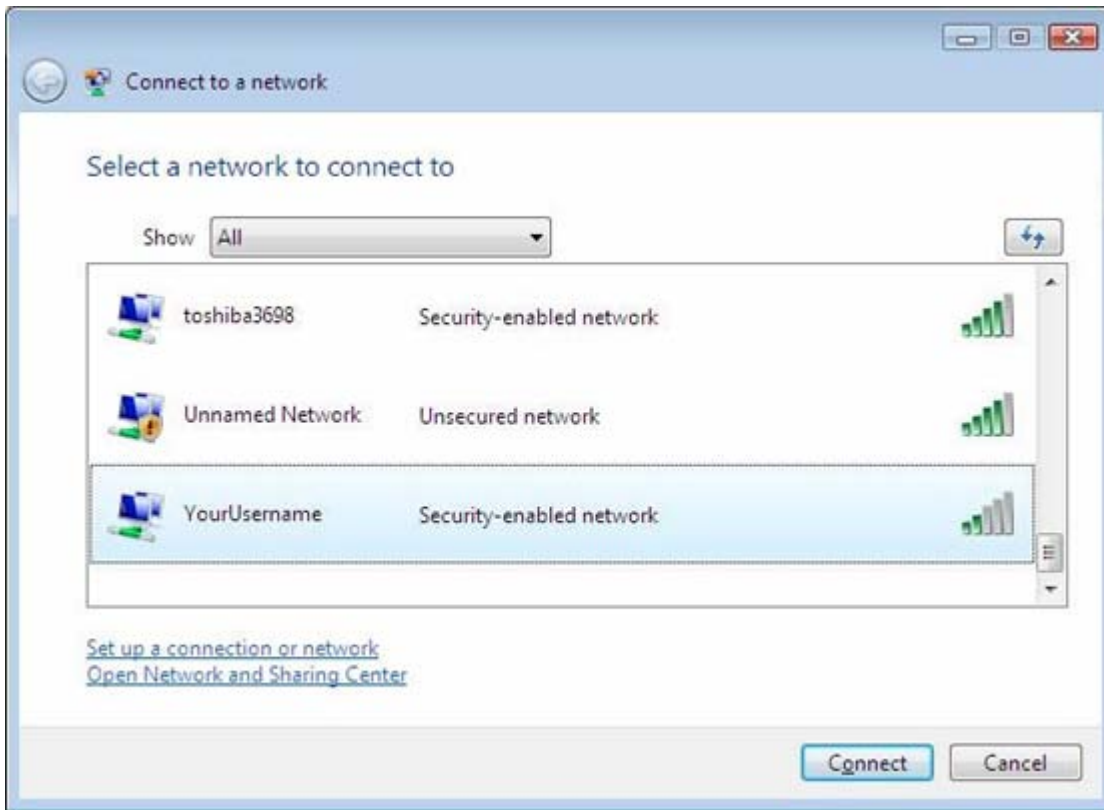
Step 2

Click on the Windows icon in the bottom left corner of your desktop (pictured below) and select **Connect To**.



Step 3

You will see a list of all the available wireless networks. Find yours by looking for the wireless network name you gave your wireless home network. Click on it, and then click **Connect**.



Step 4

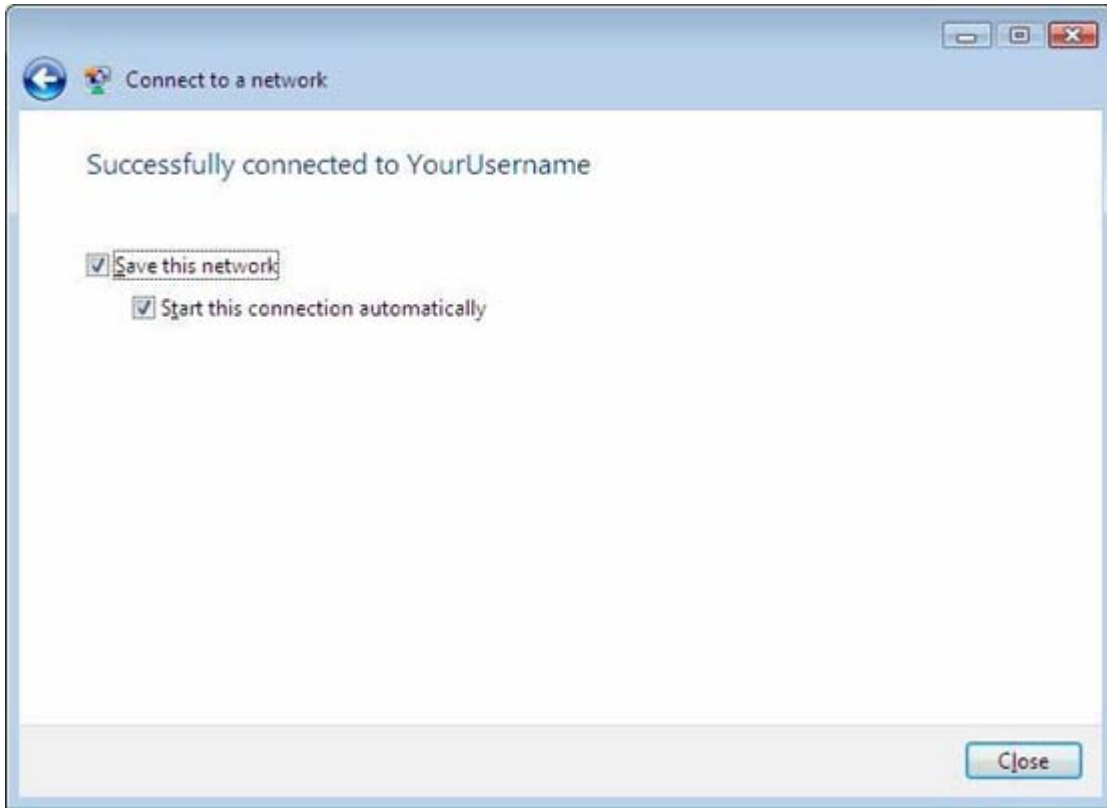
Enter the network security key or pass phrase that was created during the initial setup of your wireless gateway, and then click **Connect to connect to your wireless network.**

The network security key or pass phrase in the following picture is only an example.



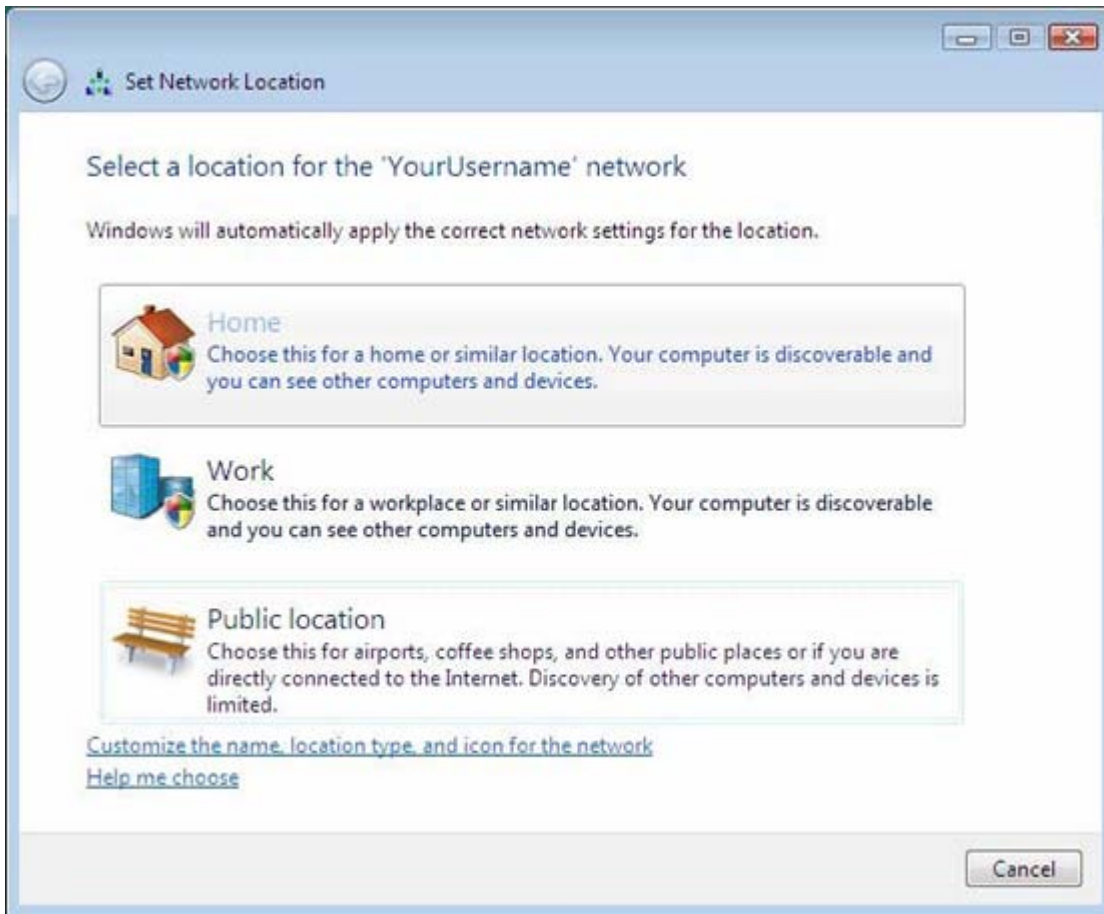
Step 5

On the next screen, ensure that you enter check marks in all the displayed options (pictured below) and then click **Close**.



Step 6

Once the next screen, choose the Home option by clicking on the house, then click Close to complete the connection and configuration of your wireless home network.



Step 7

Once the window has closed, return to the Installation Wizard and click the **Continue** button.

Step 8

Open your browser and enter an Internet address to ensure that you are connected. If you are still not getting a connection, click here for [troubleshooting](#).